



GET EQUIPPED TO TAKE YOUR
BEVERAGE BUSINESS TO THE
NEXT LEVEL

R&E

ROBOTICS &
END OF LINE

IMPROVE THROUGHPUT | SECURE CONTAINMENT | INCREASED PROFITABILITY

When beer & beverage sales are booming keeping up with demand can be difficult. Orion understands the challenge you face to improve efficiency and throughput. Orion's fast, reliable, hardworking automatic stretch wrappers are tailored for beer and beverage operations. So, you can increase speed, efficiency, and profitability without increasing your personnel.

FAST! FASTER! FASTEST! FULL THROTTLE!

FAST: FLEX HPA HIGH PROFILE AUTOMATIC

Pick up the pace with Flex HPA Automatic stretch wrapper and perform the entire wrap cycle automatically. Repeatable, safe, and secure loads, plus improved speed and load containment not possible when wrapping by hand. Simply place the pallet load on the machine and pull the lanyard switch while backing away. Every load is securely wrapped using programmed wrap patterns. Orion's load stabilizing Insta-Thread™ film delivery system and 260% powered pre-stretch maximize the film stretch and strength properties, while using the least amount of stretch film.



FASTER: RTA ROTARY TOWER AUTOMATIC

Crank up throughput another notch with the RTA Rotary Tower Automatic stretch wrapping system. Because the RTA rotates the film carriage around a stationary load, it's ideal for quickly wrapping even the most difficult loads, including fragile, unstable, light, or extremely heavy loads. There's no weight limit as loads are wrapped while sitting directly on the floor. Start the cycle with hanging lanyard and move on to the next load.



FASTEST: MA-DX LOPRO

The MA-DX and LoPro drag chain triple-strand conveyor work together as the ultimate pallet wrapping system for high volume applications. The 60 feet-per-minute LoPro conveyor keeps pace with the MA-DX's 28 RPM counter-balanced rotary arm wrapper. Eliminating ramps and rollers ensures unwrapped load stability, and the user-friendly 4" pass height makes the LoPro safe and efficient for loading with a pallet jack, electric walkie or forklift. Convey up to three 2,500-pound pallets at a time. The LoPro automatically separates pallets, wraps each individually, and re-consolidates for pickup. An integrated digital scale verifies pallet load accuracy.

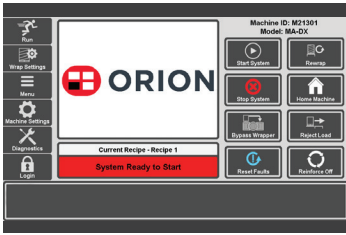


FULL THROTTLE: MA-DX2 LOPRO

Using the LoPro conveyor with our dual arm - dual carriage MA-DX2 kicks high-speed performance up to another level. Using two 30" Insta-Thread™ film carriages and 28 RPM counter-balanced rotary arms, the MA-DX2 pushes load throughput to 100 pallets an hour. Opposing carriages apply film in a crisscross pattern that improves speed, and provides additional stability.



SIMPLICITY ▪ CONTAINMENT ▪ REPEATABILITY ▪ DURABILITY



INTELLEVUE HMI

All Orion machines are equipped with a password protected 10" or 7" Intellevue HMI. An intuitive color touch screen display allows access to 10 programmed wrap recipes. For larger automatics the HMI can mount on the panel or on a free standing pedestal.



REVO-LOGIC TECHNOLOGY

Revo-Logic™ technology with photo-eye sensors ensures precise application of programmed wraps and our automatic film force to load corner compensation feature improves load stability – even for irregular, mixed loads. Separate up and down film carriage speed control and top and bottom adjustable wrap counts maximize load containment and film yield.



INSTA-THREAD™ FILM CARRIAGES

Orion InstaThread™ Film Carriages allow for safe and easy film roll loading and threading. Specially designed rollers accurately elongate film a standard 260%, providing secure loads, while reducing film costs. A 20" film carriage is standard on most machines, with a 30" film carriage option.



CAT-3 SAFETY

Industry leading CAT-3 safety features are standard on Orion Automatic stretch wrappers like the MA-DX and MA-DX2. CAT-3 electrical features include separate high and low voltage panels for operator safety and multi-zone safety e-stops.



Orion manufactures automatic and semi-automatic stretch wrapping equipment, offering the most comprehensive line of cost-effective pallet wrapping solutions at unparalleled value. As a leader in heavy-duty industrial stretch wrapping technology, Orion is dedicated to creating durable and film efficient machines without compromise to the safety and security of each pallet load. Orion is a product brand of ProMach, a global leader in packaging line solutions. As part of the ProMach Robotics & End of Line business line, Orion helps our packaging customers protect their reputation and grow the trust of their consumers. ProMach is performance, and the proof is in every package.

HEADQUARTERS - USA

4750 County Road 13 NE

Alexandria, MN 56308

P: 1-800-333-6556

F: 320-852-7621

E: Orion@ProMachBuilt.com

OrionPackaging.com

